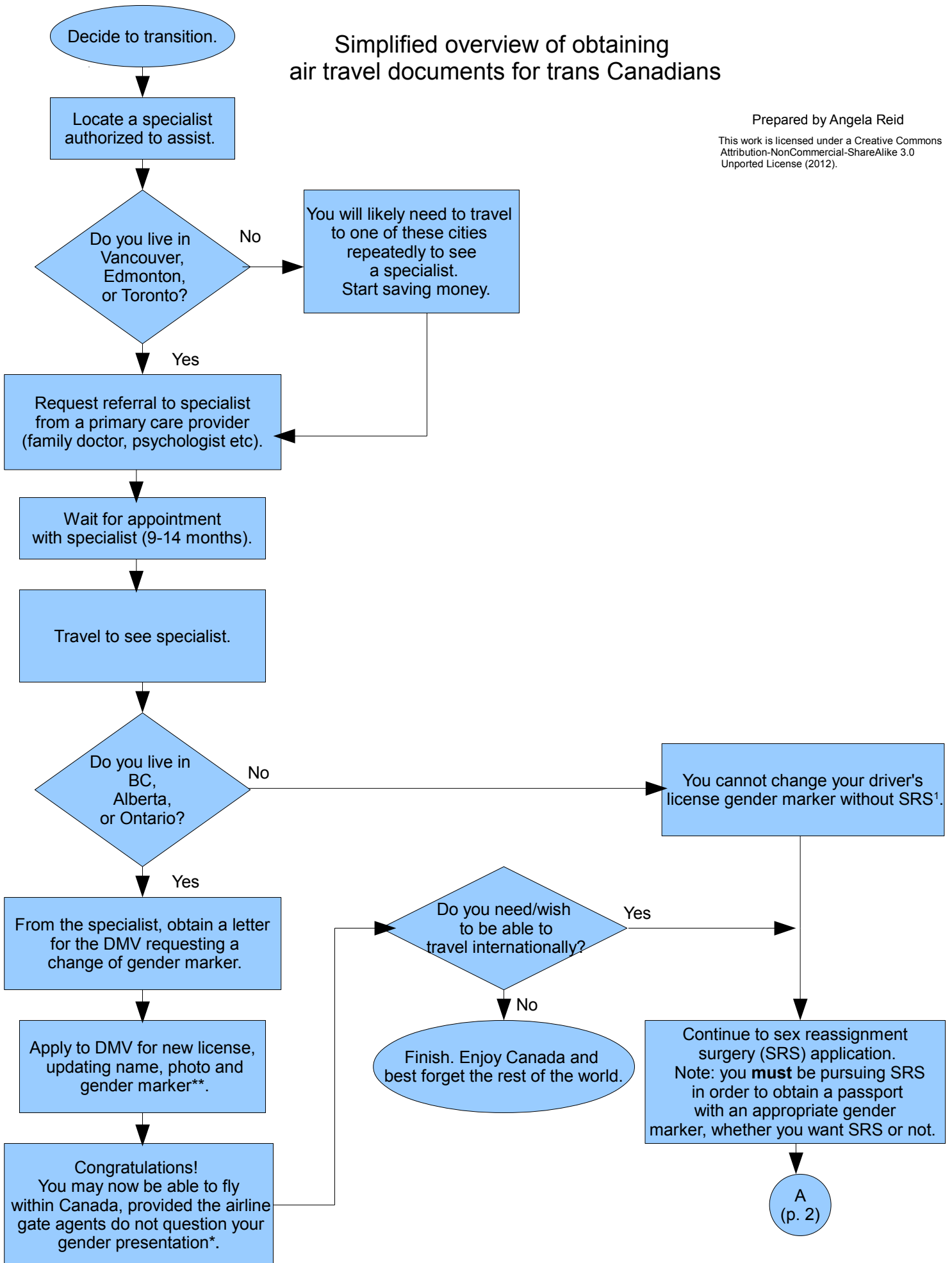
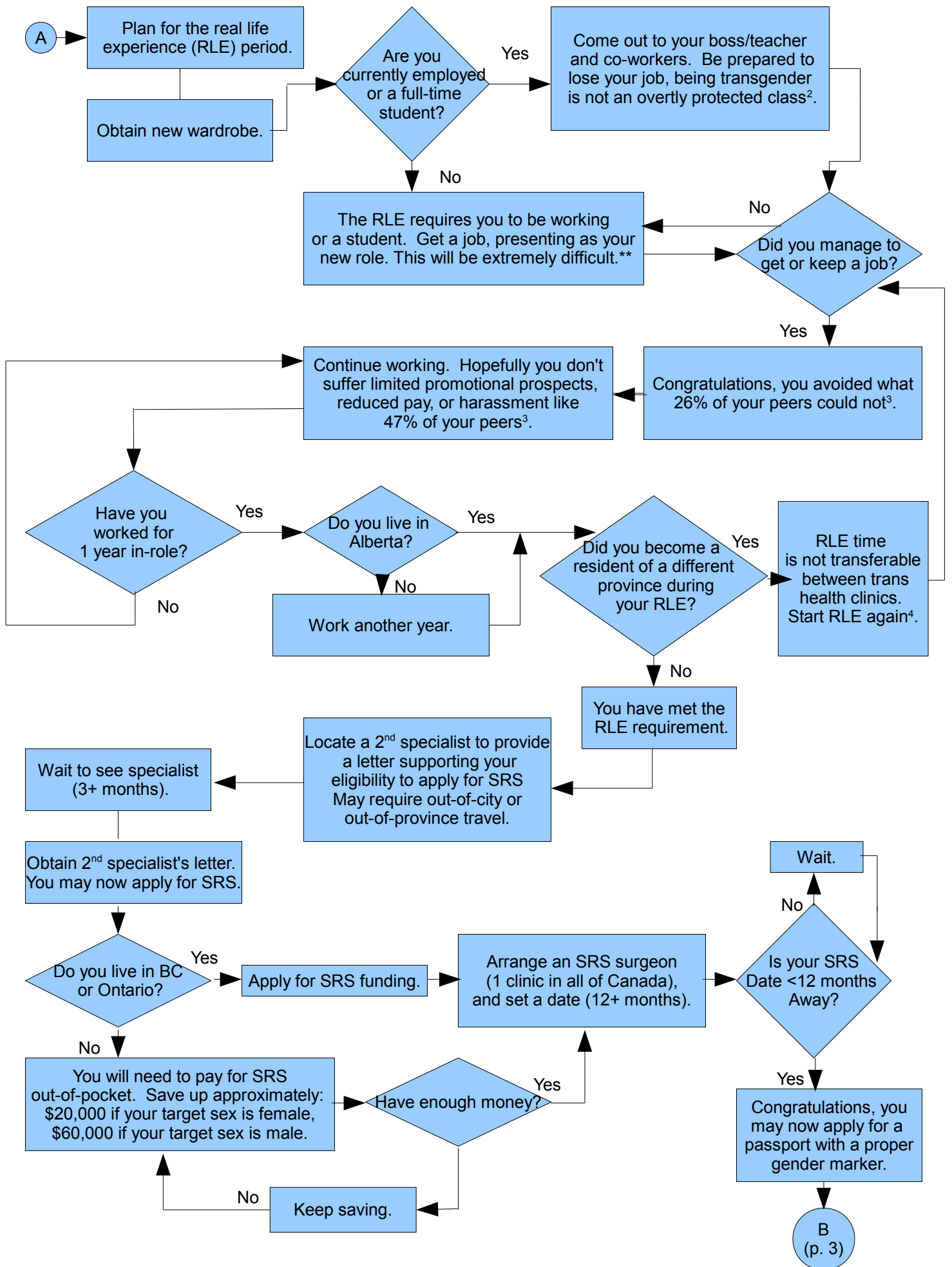


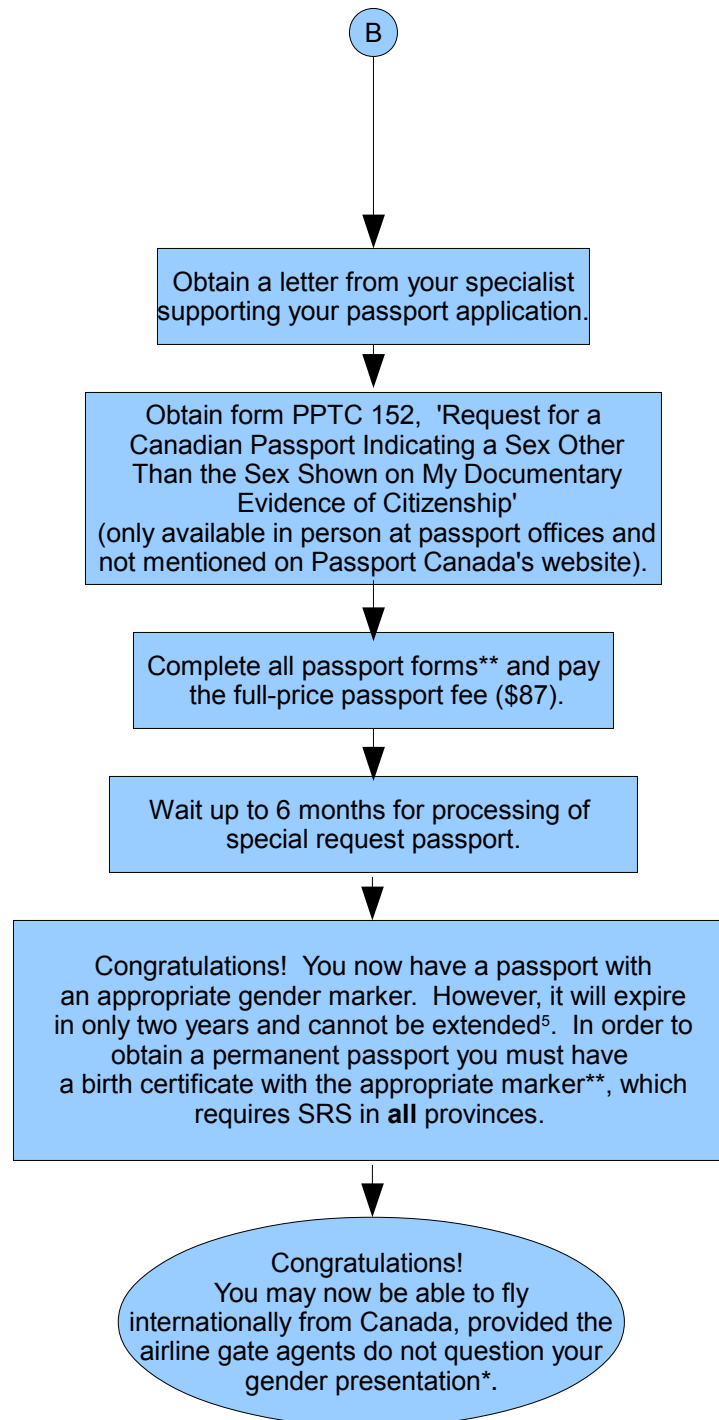
# Simplified overview of obtaining air travel documents for trans Canadians

Prepared by Angela Reid

This work is licensed under a Creative Commons Attribution-NonCommercial-ShareAlike 3.0 Unported License (2012).







<sup>1</sup>Respective provincial government websites list requirements for changing the driver's license sex marker.

<sup>2</sup> While courts may allow protections for transgender people to be read-in under the clause for sex discrimination, this has only been challenged in a few provinces and as such, it is more likely that the trans person would be fired and then begin a court case, rather than be protected from the outset. This has occurred even in provinces where trans protections under the sex clause have already been established.

<sup>3</sup> Figures taken from the National Center for Transgender Equality's 2011 report 'Injustice at Every Turn' American data is quoted here because no equivalent Canadian survey exists. Retrieved from [http://transequality.org/PDFs/Executive\\_Summary.pdf](http://transequality.org/PDFs/Executive_Summary.pdf)

<sup>4</sup> Toronto's CAMH clinic and Edmonton's clinic do not accept time spent in RLE not under the direct supervision of their programs, or require an additional full year under their program at minimum. Retrieved from [http://www.camh.net/Care\\_Treatment/Program\\_Descriptions/Mental\\_Health\\_Programs/Gender\\_Identity\\_Clinic/gender\\_identity\\_criteriasurgery.html](http://www.camh.net/Care_Treatment/Program_Descriptions/Mental_Health_Programs/Gender_Identity_Clinic/gender_identity_criteriasurgery.html)

<sup>5</sup> Official response from an inquiry to Passport Canada: A limited validity passport may be issued in an assumed sex to an applicant who provides medical documentation indicating that he or she will be undergoing sex reassignment surgery in the next twelve months. Please be advised that the passport will be valid for two years and will not be extended.

\* Note nothing prevents non-trans individuals (e.g. feminine men or masculine women) from being challenged as well.

\*\*Personal situations may make this more complicated (e.g. born in a different province or country, or lack of other forms of documentation).